

Version 1.4

Last update
01.07.2025



European Unified

Rule Book



European Unified Rule Book

Allowed Slotcars

Only slotcars from the **Gecko GT-Pro** series are allowed in this racing series. The cars **may not be modified** (out-of-the-box) (the trimming of the body, replacement of windows, **modification of the chassis**, etc. **is prohibited**). The rear spoiler support can be flexible, but the position must correspond to the original - **it must be installed before the race**. The installation of lights is optional.

Chassis

Only the **original chassis** of the Gecko GT-Pro series is permitted. The ground clearance is **0.8mm before the race** (if required by the track, the ground clearance can also be increased to 1.0mm). The **axle width** is determined by the **vehicle width**.

Motor

SRP30 LongCan, 12 Volt, 30,000 RPM. The engine must not be opened or modified. Engines **without a stamp** are not permitted.

Axes/Gear

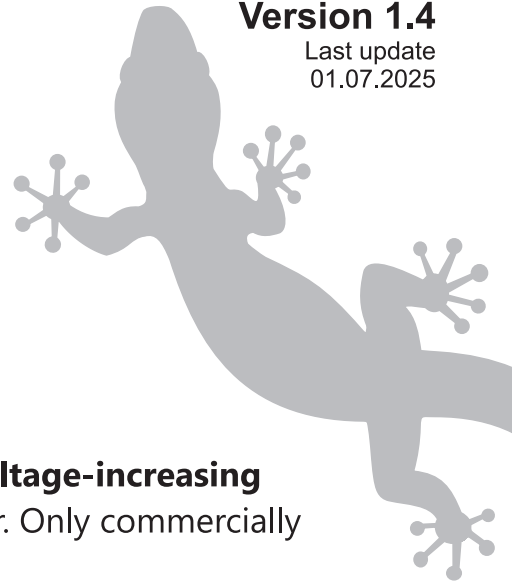
Continuous front axle made of 3mm, material is free, rear axle made of 3mm **solid steel**. The gear and pinion material is free. The gear ratio **can** be determined by the organizer/club.

Rims/Tires

Only original Gecko front and rear wheels are allowed. The **tyre hardness can** be specified by the organizer/club. The front tires may be sealed with super glue or nail polish. **Authentic wheel inserts with brake disks and authentic tire labeling are mandatory.**

Guide/Braids

The manufacturer and the shape of the **guide are free**, as well as the position (only the height above the track). The material and the width of the **braids are free**.



European Unified Rule Book

Track Voltage/Controller

Depending on the track, the voltage is at 11-13 volts. No **voltage-increasing components** may be used in the slotcars or in the controller. Only commercially available controllers are permitted.

Race procedure / Points / Championships

Vehicle acceptance

All vehicles will be checked according to the regulations before qualifying. They must be presented with the body removed for this purpose. Any identified deficiencies must be rectified immediately by the driver. All cars will be parked in the parc fermé after inspection and will remain there until the parc fermé is lifted by the race control. Vehicles may only be removed from the parc fermé by the race control. **Vehicles that do not comply with the regulations will not receive permission to start.**

Qualifying

The starting order of the participants in the qualifying is **determined by random selection**. The lane for the qualifying is **determined by random**. The duration is 60 seconds, and the time is paused after an accident and continued afterwards.

Point distribution

1st place = 100 points, 2nd place = 98 points, 3rd place = 96 points,
4th place = 95 points, 5th place = 94 points, 6th place = 93 points,
and so on....



Penalties/Unsportsmanlike Conduct

Spoiler loss during the race

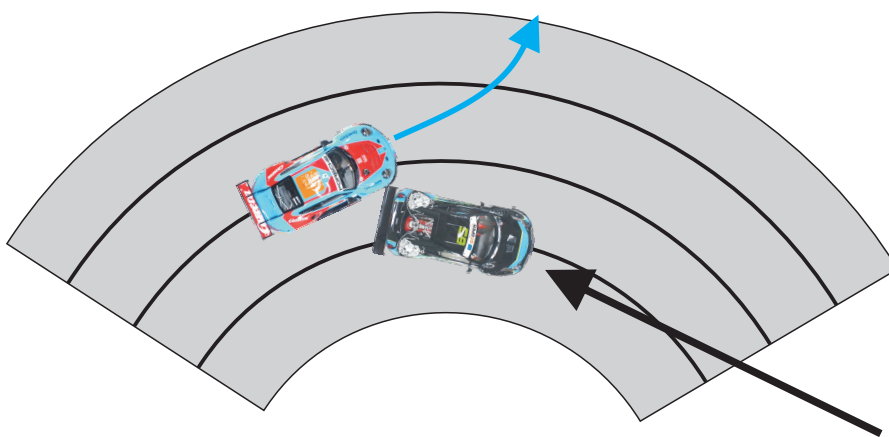
We **strongly recommend** the installation of a **flexible spoiler support**. The rear spoiler must be secured in its original position throughout the entire race.

If a participant loses a rear spoiler during the race, they will receive a sports penalty **of ONE lap deduction PER LANE driven** - **or the rear spoiler is reattached to the original position with tape within 3 laps.**

Kick-Outs

Each driver has his own lane, and if he leaves it in the curve (slides), it is not a problem as long as no other driver is hindered or knocked off their lane.

If a driver intentionally or unintentionally takes another driver out of the slot in the curve (Kick-Out), then the perpetrator (driver of the inner lane) will **receive ONE lap deduction.**



PENALTY